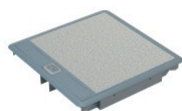


CAT. N° 6 896 30

**FLOOR BOX - 3 COMPARTMENTS - GREY COVER RAL 7031 WITH RIGID CABLE EXITS**

Pack (number of units)	5
Volume (dm ³)	20,172
Weight (g)	7 925,00

Product characteristics**Lid and trims for carpet**

- To be equipped with Arteor wiring accessories
- Supplied with flexible or rigid cable exits

3-compartment floor boxes

- To be filled on either:
 - modular backbox for raised floors Cat.No 6 896 39
 - screed floor backbox Cat.No 6 896 34
- Grey cover RAL 7031 with rigid cable exits

General characteristics**Floor boxes for carpet**

- Conform to IEC/EN 60670-23
- Compatible with either raised access floor trunking system and screed floor system

Documentation**Catalogue pages & additional information**

- [Description page \(p.864\)](#)
- [Floor service outlet boxes and access units](#)
- [Floor boxes for carpet](#)

**Installation & technical data**

- [F01020EN-02](#)
- [F01021EN-01](#)
- [F01022EN-01](#)
- [F01366EN-00](#)

**Installation instructions & related documents**

- [LE02951AA_02](#)

**Agreements & certificates of conformity**

- [OC / CB - FR 636598C](#)
- [NF - 636598A](#)
- [NF 004 - 636641A](#)