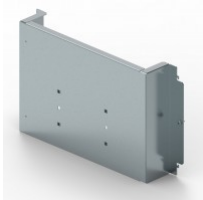


CAT. N° 3 390 02



## FIXING PLATE FOR XL<sup>3</sup> S 630 AND 4000 24-MODULE ENCLOSURE - FOR DPX-IS 630 3P/4P - HORIZONTAL MOUNTING

Pack (number of units)	1
Volume (dm <sup>3</sup> )	19,36
Weight (g)	3 733,00

### Product characteristics

#### Fixing plates for DPX-IS 630 - horizontal mounting on side uprights

- 3P/4P
- For 24-module enclosure

### General characteristics

#### XL<sup>3</sup> S 4000 - equipment for mounting DPX-IS 630 on plate

### Documentation

#### Catalogue pages & additional information

- [Selection chart \(p.232-233\)](#)
- [Description page \(p.239\)](#)
- [Selection chart \(p.244-245\)](#)
- [Description page \(p.250\)](#)

#### Installation & technical data

- [F02370EN-02](#)

#### Environmental product profile

- [LGRP-00470-V01](#)

#### Installation instructions & related documents

- [LE09860AB](#)

#### Agreements & certificates of conformity

- [LOVAG-IT 17](#)
- [LOVAG-IT 18](#)
- [LOVAG-IT 18](#)
- [LOVAG-IT 18](#)
- [LOVAG-IT 18](#)
- [LOVAG-IT 18](#)
- [LOVAG-IT 18](#)
- [LOVAG-IT 18](#)