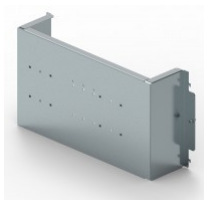


CAT. N° 3 389 22



## FIXING PLATE FOR XL<sup>3</sup> S 630 AND 4000 24-MODULE ENCLOSURE - FOR DPX-IS 250 3P/4P - VERTICAL MOUNTING

Pack (number of units)	1
Volume (dm <sup>3</sup> )	21,791
Weight (g)	3 657,00

### Product characteristics

#### Fixing plates for DPX-IS 250 - vertical mounting

- 3P/4P
- For 24-module enclosure

### General characteristics

#### XL<sup>3</sup> S 4000 - equipment for mounting DPX-IS 250 on plate

### Documentation

#### Catalogue pages & additional information

- [Selection chart \(p.232-233\)](#)
- [Description page \(p.238\)](#)
- [Description page \(p.249\)](#)
- [Technical page \(p.254\)](#)

#### Installation & technical data

- [F02370EN-02](#)

#### Environmental product profile

- [LGRP-00470-V01](#)

#### Installation instructions & related documents

- [LE09860AB](#)

#### Agreements & certificates of conformity

- [LOVAG-IT 17](#)
- [LOVAG-IT 18](#)
- [LOVAG-IT 18](#)
- [LOVAG-IT 18](#)
- [LOVAG-IT 18](#)
- [LOVAG-IT 18](#)
- [LOVAG-IT 18](#)
- [LOVAG-IT 18](#)