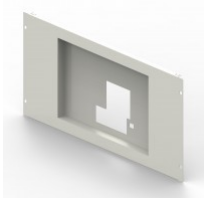


CAT. N° 3 388 54



## FACEPLATE FOR XL<sup>3</sup> S 4000 36-MODULE ENCLOSURE - FOR DPX<sup>3</sup> 1600 3P/4P FIXED ON PLATE - VERTICAL MOUNTING

Pack (number of units)	1
Volume (dm <sup>3</sup> )	15,39
Weight (g)	3 142,00

### Product characteristics

#### Faceplates for DPX<sup>3</sup> 1600 fixed on plate

- Fixed with locking clips, 1/4 turn screws or screws

#### Vertical mounting

- 3P/4P
- For 36-module enclosure

### General characteristics

#### XL<sup>3</sup> S 4000 - equipment for mounting DPX<sup>3</sup> 1600 and DPX-IS 1600 on plate

### Documentation

#### Catalogue pages & additional information

- [Selection chart \(p.244-245\)](#)
- [Description page \(p.251\)](#)

#### Agreements & certificates of conformity

- [LOVAG-IT 18](#)
- [LOVAG-IT 18](#)
- [LOVAG-IT 18](#)
- [LOVAG-IT 18](#)
- [LOVAG-IT 18](#)

#### Installation & technical data

- [F02370EN-02](#)

#### Environmental product profile

- [LGRP-00470-V01](#)