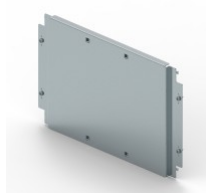


CAT. N° 3 388 12



FIXING PLATE FOR XL³ S 4000 24-MODULE ENCLOSURE - FOR DPX³ 1600 AND DPX-IS 1600 3P/4P - VERTICAL MOUNTING

Pack (number of units)	1
Volume (dm ³)	11,286
Weight (g)	3 072,00

Product characteristics

Fixing plates for DPX³ 1600 and DPX-IS 1600 - vertical mounting

- 3P/4P
- For 24-module enclosure

General characteristics

XL³ S 4000 - equipment for mounting DPX³ 1600 and DPX-IS 1600 on plate

Documentation

Catalogue pages & additional information

- [Selection chart \(p.244-245\)](#)
- [Description page \(p.251\)](#)

Installation & technical data

- [F02370EN-02](#)

Environmental product profile

- [LGRP-00470-V01](#)

Installation instructions & related documents

- [LE09871AB](#)

Agreements & certificates of conformity

- [LOVAG-IT 18](#)
- [LOVAG-IT 18](#)
- [LOVAG-IT 18](#)
- [LOVAG-IT 18](#)
- [LOVAG-IT 18](#)