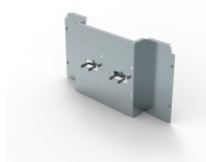


CAT. N° 3 384 81



FIXING PLATE FOR XL³ S 630 AND 4000 36-MODULE ENCLOSURE - FOR DPX³ 630 TRANSFER SWITCH - VERTICAL MOUNTING

| | |
|---------------------------|----------|
| Pack (number of units) | 1 |
| Volume (dm ³) | 33,413 |
| Weight (g) | 6 755,00 |

Product characteristics

Fixing plates for DPX³ 630 transfer switch version - vertical mounting

Transfer switch without motor-driven handle

- 3P/4P
- For 36-module enclosure

General characteristics

XL³ S 630 - equipment for mounting DPX³ 630 and DRX 630 on a plate

Documentation

Installation instructions & related documents

- [LE11168AB](#)

Agreements & certificates of conformity

- [LOVAG-IT 17](#)
- [LOVAG-IT 18](#)
- [LOVAG-IT 18](#)
- [LOVAG-IT 18](#)
- [LOVAG-IT 18](#)
- [LOVAG-IT 18](#)
- [LOVAG-IT 18](#)
- [LOVAG-IT 18](#)