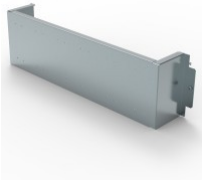


CAT. N° 3 384 26



## FIXING PLATE FOR XL<sup>3</sup> S 630 AND 4000 36-MODULE ENCLOSURE - FOR DPX<sup>3</sup> 250 3P - VERTICAL MOUNTING

Pack (number of units)	1
Volume (dm <sup>3</sup> )	20,075
Weight (g)	3 572,00

### Product characteristics

#### Fixing plates for DPX<sup>3</sup> 160/250 - vertical mounting

##### DPX<sup>3</sup> 250

- 3P
- For 36-module enclosure

### General characteristics

#### XL<sup>3</sup> S 4000 - equipment for mounting DPX<sup>3</sup> 160/250 on plate

### Documentation

#### Catalogue pages & additional information

- [Selection chart \(p.232-233\)](#)
- [Description page \(p.237\)](#)
- [Selection chart \(p.242-243\)](#)
- [Description page \(p.248\)](#)

#### Agreements & certificates of conformity

- [LOVAG-IT 17](#)
- [LOVAG-IT 18](#)
- [LOVAG-IT 18](#)
- [LOVAG-IT 18](#)
- [LOVAG-IT 18](#)
- [LOVAG-IT 18](#)
- [LOVAG-IT 18](#)
- [LOVAG-IT 18](#)

#### Installation & technical data

- [F02370EN-02](#)

#### Environmental product profile

- [LGRP-00470-V01](#)