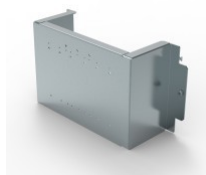


CAT. N° 3 384 20



FIXING PLATE FOR XL³ S 630 AND 4000 16-MODULE ENCLOSURE - FOR DPX³ 250 3P/4P - VERTICAL MOUNTING

Pack (number of units)	1
Volume (dm ³)	12,32
Weight (g)	2 207,00

Product characteristics

Fixing plates for DPX³ 160/250 - vertical mounting

DPX³ 250

- 3P/4P
- For 16-module enclosure

General characteristics

XL³ S 4000 - equipment for mounting DPX³ 160/250 on plate

Documentation

Catalogue pages & additional information

- [Selection chart \(p.232-233\)](#)
- [Description page \(p.237\)](#)
- [Selection chart \(p.242-243\)](#)
- [Description page \(p.248\)](#)

Agreements & certificates of conformity

- [LOVAG-IT 17](#)
- [LOVAG-IT 18](#)
- [LOVAG-IT 18](#)
- [LOVAG-IT 18](#)
- [LOVAG-IT 18](#)
- [LOVAG-IT 18](#)
- [LOVAG-IT 18](#)
- [LOVAG-IT 18](#)

Installation & technical data

- [F02370EN-02](#)

Environmental product profile

- [LGRP-00470-V01](#)