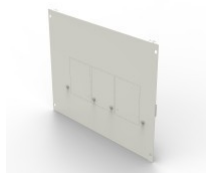


CAT. N° 3 383 93



## FACEPLATE FOR XL<sup>3</sup> S 630 AND 4000 24-MODULE ENCLOSURE - FOR DPX<sup>3</sup>630 WITH HANDLE - VERTICAL MOUNTING

Pack (number of units)	1
Volume (dm <sup>3</sup> )	8,755
Weight (g)	2 671,00

### Product characteristics

#### Faceplates for DPX<sup>3</sup> 630 with rotary or motor-driven handle - vertical mounting

- Fixed with locking clips, 1/4 turn screws or screws
- 3P/4P
- For 24-module enclosure

### General characteristics

#### XL<sup>3</sup> S 630 - equipment for mounting DPX<sup>3</sup> 630 and DRX 630 on a plate

### Documentation

#### Agreements & certificates of conformity

- [LOVAG-IT 17](#)
- [LOVAG-IT 18](#)
- [LOVAG-IT 18](#)
- [LOVAG-IT 18](#)
- [LOVAG-IT 18](#)
- [LOVAG-IT 18](#)
- [LOVAG-IT 18](#)