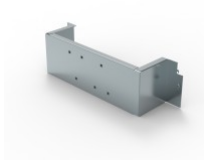


REF . 3 390 60



## FIXING PLATE FOR XL<sup>3</sup> S 630 AND 4000 24-MODULE ENCLOSURE - FOR DCX-M SIZE 1 UP TO 63A - VERTICAL MOUNTING



|                                     |          |
|-------------------------------------|----------|
| Emballage (nombre number of units ) | 1        |
| Volume (dm <sup>3</sup> )           | 14,493   |
| Poids (g)                           | 2 302,00 |

### Caractéristiques du produit

Fixing plates for DCX-M - vertical mounting  
For DCX-Msize 1 - up to 63 A  
■ For 24-module enclosure

### Caractéristiques générales

XL<sup>3</sup> S 630 - equipment for mounting DCX-M on a plate

### Documentation associée

#### Installation instructions & related documents

- [LE11169AB](#)

#### Agreements & certificates of conformity

- [LOVAG-IT 17](#)
- [LOVAG-IT 18](#)
- [LOVAG-IT 18](#)
- [LOVAG-IT 18](#)
- [LOVAG-IT 18](#)
- [LOVAG-IT 18](#)
- [LOVAG-IT 18](#)
- [LOVAG-IT 18](#)