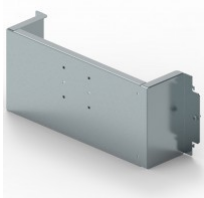


CAT. N° 3 389 02



FIXING PLATE FOR XL³ S 630 AND 4000 24-MODULE ENCLOSURE - FOR DPX-IS 250 3P/4P - HORIZONTAL MOUNTING

Pack (number of units)	1
Volume (dm ³)	16,94
Weight (g)	2 830,00

Product characteristics

Fixing plates for DPX-IS 250 - horizontal mounting

- 3P/4P
- For 24-module enclosure

General characteristics

XL³ S 4000 - equipment for mounting DPX-IS 250 on plate

Documentation

Catalogue pages & additional information

- [Selection chart \(p.232-233\)](#)
- [Description page \(p.238\)](#)
- [Description page \(p.249\)](#)
- [Technical page \(p.254\)](#)

Installation & technical data

- [F02370EN-02](#)

Environmental product profile

- [LGRP-00470-V01](#)

Installation instructions & related documents

- [LE09860AB](#)

Agreements & certificates of conformity

- [LOVAG-IT 17](#)
- [LOVAG-IT 18](#)
- [LOVAG-IT 18](#)
- [LOVAG-IT 18](#)
- [LOVAG-IT 18](#)
- [LOVAG-IT 18](#)
- [LOVAG-IT 18](#)
- [LOVAG-IT 18](#)