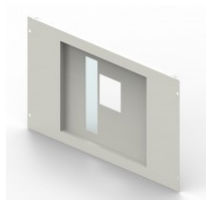


CAT. N° 3 388 64

**FACEPLATE FOR XL³ S 4000 36-MODULE ENCLOSURE -
FOR DPX-IS 1600 4P - HORIZONTAL MOUNTING**


Pack (number of units)	1
Volume (dm ³)	11,76
Weight (g)	3 479,00

Product characteristics**Faceplates for DPX-IS 1600**

- Fixed with locking clips, 1/4 turn screws or screws

Horizontal mounting

- 4P
- For 36-module enclosure

General characteristics**XL³ S 4000 - equipment for mounting DPX³ 1600 and
DPX-IS 1600 on plate****Documentation** **Catalogue pages & additional information**

- [Selection chart \(p.244-245\)](#)
- [Description page \(p.251\)](#)

 **Agreements & certificates of conformity**

- [LOVAG-IT 18](#)
- [LOVAG-IT 18](#)
- [LOVAG-IT 18](#)
- [LOVAG-IT 18](#)
- [LOVAG-IT 18](#)

 **Installation & technical data**

- [F02370EN-02](#)