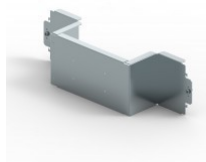


CAT. N° 3 385 04



FIXING PLATE FOR HORIZONTAL MOUNTING OF DRX 125 HP IN 24-MODULE ENCLOSURE XL³ S 630 - 4P

Pack (number of units)	1
Volume (dm ³)	13,745
Weight (g)	2 166,00

Product characteristics

Fixing plates for DRX 125 HP on side uprights

Horizontal mounting

- 4P
- For 24-module enclosure

General characteristics

XL³ S 630 - equipment for mounting DRX 125 HP on a plate

Documentation

Installation instructions & related documents

- [LE09873AA](#)

Agreements & certificates of conformity

- [LOVAG-IT 17](#)
- [LOVAG-IT 18](#)
- [LOVAG-IT 18](#)
- [LOVAG-IT 18](#)
- [LOVAG-IT 18](#)
- [LOVAG-IT 18](#)
- [LOVAG-IT 18](#)
- [LOVAG-IT 18](#)

Installation & technical data

- [F02370EN-02](#)