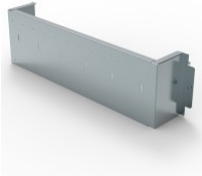


CAT. N° 3 383 28



FIXING PLATE FOR XL³ S 630 AND 4000 36-MODULE ENCLOSURE - FOR DPX³ 160 4P WITH E.L.C.B.S - VERTICAL MOUNTING

Pack (number of units)	1
Volume (dm ³)	24,255
Weight (g)	3 590,00

Product characteristics

Fixing plates for DPX³ 160/250 - vertical mounting


DPX³ 160

- 4P with e.l.c.bs
- For 36-module enclosure

General characteristics

XL³ S 4000 - equipment for mounting DPX³ 160/250 on plate

Documentation

 **Catalogue pages & additional information**

- [Selection chart \(p.230-231\)](#)
- [Description page \(p.237\)](#)
- [Selection chart \(p.242-243\)](#)
- [Description page \(p.248\)](#)

 **Agreements & certificates of conformity**

- [LOVAG-IT 17](#)
- [LOVAG-IT 18](#)
- [LOVAG-IT 18](#)
- [LOVAG-IT 18](#)
- [LOVAG-IT 18](#)
- [LOVAG-IT 18](#)
- [LOVAG-IT 18](#)
- [LOVAG-IT 18](#)

 **Installation & technical data**

- [F02370EN-02](#)