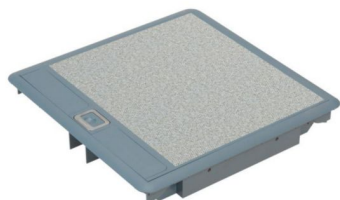


Product sheet



LEGRAND

Floor box - 3 compartments - Grey cover RAL 7031 with rigid cable exits

REF. 689630 | EAN. 3245066896304

[> Visit e-catalogue](#)

Product characteristics





- Floor boxes for carpet - Conform to IEC/EN 60670 - 23 - Compatible with either raised access floor trunking system and screed floor system
- Lid and trims for carpet - To be equipped with Arteor wiring Accessories - Supplied with flexible or rigid cable exits3 - compartment floor boxes - To be filled on either : - modular backbox for raised floors Cat.No 6 896 39 - screed floor backbox Cat.No 6 896 34 - Grey cover RAL 7031 with rigid cable exits

Documentation

TECHNICAL DOCUMENTATION

-  F01366EN-00.pdf | PDF (0.55Mo)
-  F01022EN-01.pdf | PDF (1.48Mo)
-  LE02951AA_02.pdf | PDF (2.02Mo)
-  F01021EN-01.pdf | PDF (1.66Mo)
-  F01020EN-02.pdf | PDF (1.34Mo)

Agreements & Certificates

-  LGRP-01205-V02.01-EN.pdf | PDF (0.76Mo)
-  NF App Domestic-636598A | (0.24Mo)
-  OC / CB-FR 636598C | (0.39Mo)
-  NF Conduits-636641A | (0.85Mo)

CATALOGUE PAGE & OTHERS

-  ex223001_1155.pdf | PDF (0.12Mo)
-  ex223001_1156-1157.pdf | PDF (0.82Mo)