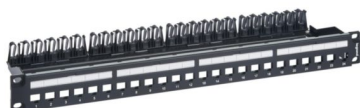


Product sheet



LINKEO C LEGRAND

Patch panel 24 RJ45 category 5e, 6 or 6A Keystone to be equipped with metal cable holder

REF. 632850 | EAN. 3414972185509

> [Visit e-catalogue](#)

Product characteristics

- For 24 keystone connectors category 5e, 6 or 6A
- LINKEO C patch panel comes with a rear cable management system as standard that lets you simply organize cables, providing a neat and clean installation.
- Pre - position panels for a quick look : you're able to pre - position any LINKEO C patch panels in the uprights to get a global overview of your installation
- Equipped with cable management and label holder as standard
- Delivered in 100% recycled cardboard packaging, without plastic film and ready to use

The product's benefits

Installation

- Designed to speed up your work, the LINKEO C patch panel facilitates installation and maintenance. Simply insert it into the uprights of the cabinet without screwing it in. It holds in place. You can now easily carry out all your operations. Screw each panel in place once everything is properly connected.

Usage

- New ergonomic design that improves your comfort and your performance at work

Documentation

TECHNICAL DOCUMENTATION

-  S000122350FR-01.pdf | PDF (3.99Mo)
-  LE13274AA.pdf | PDF (1.21Mo)
-  S000117683FR-03.pdf | PDF (4.13Mo)
-  S000117683EN-03.pdf | PDF (4.14Mo)
-  S000122350EN-01.pdf | PDF (4.01Mo)


CAD & Design specs / BIM

- Patch panel.rfa | RFA (2.35Mo)
- Panneau de brassage.rfa | RFA (2.35Mo)

CATALOGUE PAGE & OTHERS

-  ex223001_0941.pdf | PDF (0.1Mo)

Agreements & Certificates

-  LGRP-01940-V01.01-FR.pdf | PDF (1.13Mo)
-  LGRP-01940-V01.01-EN.pdf | PDF (1.15Mo)