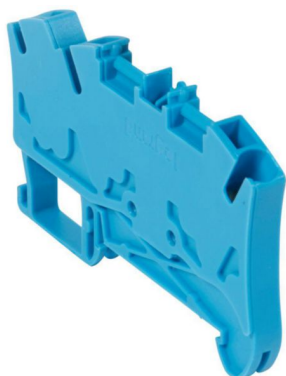


# Product sheet



## VIKING 3 LEGRAND

Connecting terminal block, screw connection, 1 connection 1entry/2outlets, Cross-section 4mm<sup>2</sup> - pitch 6mm -blue

REF. 037244 | EAN. 3245060372446

> [Visit e-catalogue](#)

## Product characteristics

- Blue terminal blocks are recommended for neutral conductor or security circuits.
- Direct tool - free insertion of a rigid wire or a flexible wire with ferrules, up to 6mm pitch
- 2 areas for automatic insertion bridging combs (upper level only for multi-level terminal blocks)
- Easy insertion of conductors thanks to the ergonomic shape of the entry and outlet.

## Recommendation / Restriction

- Installation recommended for electrical connection in industrial and tertiary cabinets and enclosures.

## The product's benefits

### Installation



- A securing pin on the insulating body holds the Viking 3 terminal blocks together for ease of handling and perfect alignment on the rail. The assembly/disassembly of a terminal block is still possible without removing the adjacent terminal blocks

### Usage

- Terminal blocks have two marking zones per level allowing a clear, visible and convenient identification of the circuit.

## Documentation



### TECHNICAL DOCUMENTATION

-  F01007EN-02.pdf | PDF (1.06Mo)
-  F01007FR-02.pdf | PDF (1.09Mo)

### CAD & Design specs / BIM

-  037244.dwg | DWG (0.09Mo)

### CATALOGUE PAGE & OTHERS

-  ex223001\_0467.pdf | PDF (0.06Mo)
-  ex223001\_0468.pdf | PDF (0.05Mo)
-  ex223001\_0460.pdf | PDF (0.17Mo)

### Agreements & Certificates

-  IMQ-CA02.04198 | (0.82Mo)
-  UL recogn-20100921-E60900 | (0.15Mo)
-  ATEX-LCIE 16 ATEX 3049U - 02 | (0.71Mo)
-  VERITAS (BV)-23393/C0 BV | (0.61Mo)
-  NF App Domestic-NF208\_1012 | (1.06Mo)



Ex-002/j | (0.22Mo)