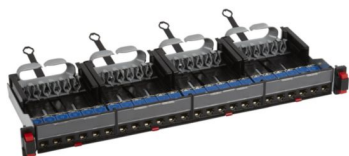


# Product sheet



LCS<sup>3</sup> LEGRAND

Patch panel 19 inch - equipped with 24 RJ45 Category 6 STP

REF. 033762 | EAN. 3414970870575

This 19 inch patch panel is ready to use with 24 RJ45 and also a new generation quick-fix mechanism for automatic screwless mounting on the cabinets uprights. The automatic removal of each cassette is possible using a push button.

> [Visit e-catalogue](#)

## Description

This 19 inch patch panel is ready to use with 24 RJ45 and also a new generation quick-fix mechanism for automatic screwless mounting on the cabinets uprights. The automatic removal of each cassette is possible using a push button.

### Product characteristics

- Equipped with 4 extractable cassettes each containing 6 connectors. Cat 6 STP RJ45 quick - connect connectors (no tools required), with 568 A/B marking.
- Equipped with rear cable guide to hold the cables.
- 19" panel - 1 U.
- Supplied with coloured labels, white yellow, blue and red.
- The panel ensure automatic earthing of each connector.

### Recommendation / Restriction

- Compliant with ISO/IEC 11801 edition 3.0 (2017) and EIA/TIA 568 C2-1 standards

## The product's benefits

### Installation

- Front-panel and fast-snap accessibility of each individual connector provide ease and reliability for installation and maintenance. Universal and secured mounting on any cabinet or enclosure through new generation quick-fix anchorage. Automatic cassette removal by a simple button press. Hands-free cassette support during installation or maintenance while in the extracted position.

### Usage


- Daily user maintenance is rendered easy through the move-add-change management of each cassette and individual connector.

### Avantages

- Save time at both installation and in daily maintenance by taking advantage of the screwless mounting and the automatic removal of each cassette.

## Documentation

### TECHNICAL DOCUMENTATION

 S000096849FR-05.pdf | PDF (4.55Mo)

 S000096849EN-05.pdf | PDF (4.55Mo)

 LE09727AD.pdf | PDF (4.73Mo)





### CAD & Design specs / BIM

### CATALOGUE PAGE & OTHERS

 ex223001\_0983.pdf | PDF (0.16Mo)

### Agreements & Certificates

Flat patch panels equipped copper.rfa | RFA (0.94Mo)  
Panneaux de brassages droits équipés cuivre.rfa | RFA (0.85Mo)

-  AoC-Ac Delta Force 4PPoE 2019-677 | (0.08Mo)
-  AoC-PL2\_C6\_STP\_32757\_ac1181031 | (0.08Mo)
-  AoC-CL2\_C6\_STP\_32757\_ac1181032 | (0.08Mo)
-  AoC-Composant Cat6 STP 3P-1200330 | (0.06Mo)