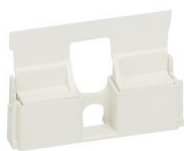


CAT. N° 1 380 93



## MECHANICAL STATUS INDICATOR - FOR ADDITIONAL SIGNALLING

Pack (number of units)	1
Volume (dm <sup>3</sup> )	0,117
Weight (g)	14,00

### Product characteristics

#### Accessories

- Mechanical status indicator
- Provides additional signalling
- Supplied with a sheet of labels customized for each application
- Compatible with devices Cat.Nos 1 380 69/68/23/25/48/71/73/74

### General characteristics

**Safety boxes 90 series - for fire detection and fire alarm system, emergency exit, extinguishing system, remote switching**

### Documentation



#### Catalogue pages & additional information

- [Description page \(p.695\)](#)
- [Safety boxes 90 series old range / new range chart](#)



#### Installation instructions & related documents

- [LE07345AB](#)