

Smart Rack Controller

INTELLIGENT SENSOR MANAGEMENT SOLUTION

The Raritan Smart Rack Controller (SRC) is an intelligent sensor management solution that serves as a central connection point for environmental monitoring, asset location, physical access, and other monitoring and security sensors. It addresses the gaps in instrumenting a facility or data center by providing an all-in-one intelligent device that collects and delivers real-time actionable data about your facility with minimum change needed to the configuration of existing power distribution or IT infrastructure.

Our proprietary Xerus™ Technology Platform powers the SRC with the latest iX7™ controller that delivers a future-proof design. Its multiple interface ports connect, monitor, and manage DX2 SmartSensors™, Asset Management accessories, and the SmartLock™ System into one device. It is a plug-and-play solution that can measure data in remote areas while seamlessly integrating with BMS and DCIM software. This allows you to measure conditions accurately and quickly from anywhere, providing valuable insights to optimize and drive efficiency in a facility.



BENEFITS

- Ensure uptime by monitoring racks for possible hot spots
- Save on cooling costs by confidently raising data center or facility temperatures
- Maintain cabinet and enclosure security with USB peripherals and contact closure sensors
- Improve data center uptime by receiving environmental alerts
- Gain audited controlled access to sensitive IT assets with the SmartLock System
- Available in 100–240VAC and +/- 48VDC power options

HOW DOES IT WORK?

The SRC is a central connection point for Legrand's suite of SmartSensors™, the SmartLock System, and Asset Management sensors. The LCD and remotely accessible web GUI provide access to sensor readings, including data collected from connected sensors. These readings can be viewed in the GUI or passed on to energy management, building management, or monitoring systems for further analysis.



SmartSensors

Our suite of SmartSensors monitors the environment within a data center. They facilitate easy deployment while providing accurate data and insight into your operation. SmartSensors are available for monitoring temperature, humidity, airflow, differential air pressure, dust/particles, water/leaks, contact closures, proximity detection, vibration, and more.



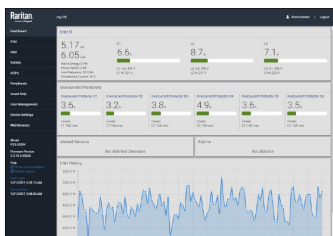
SmartLock Door System

SmartLock is a networked and intelligent electronic door access and control system designed to deliver audited controlled access to IT assets in the data centers'. It is an economically scalable solution that addresses evolving cabinet-level physical security requirements and improves the workflow management of regulatory compliance from PCI DSS, SOX, SSAE, HIPAA, GDPR, and EN50600.



Asset Management Tags & Sensors

Asset Management Tags and Sensors provide an accurate, automated, real-time inventory of your IT assets and their locations down to the 1U level. Each tag and sensor integrate with DCIM software to easily track assets, determine capacity, and manage adds, moves, or changes.



Powered by the Xerus Technology Platform

Xerus is a technology platform that combines hardware and software and is the core of the SRC. It comprises a state-of-the-art network interface module, pushbutton-enabled multi-color LCD, open APIs, and a wealth of interface ports. Xerus helps to maximize data center efficiency by delivering security, high compute power, advanced alerting, intelligence, and complete visibility into your power chain.

FEATURES



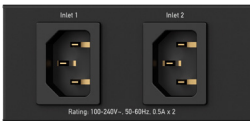
Optimize Your Environment

Connect up to 204 plug-and-play sensors* that monitor and manage critical environmental conditions, such as temperature, humidity, and airflow, and security conditions with physical access control devices like door handles and card readers. (*requires additional accessories)



Receive Advanced Alerts

Define thresholds and receive alerts via SNMP, email, and API when thresholds are crossed for asset and environmental events.



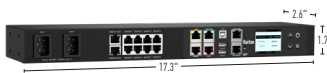
Power Redundancy

Gain genuine power redundancy with dual power supplies and inputs. If one power feed fails, the SRC will still operate as usual and continue to collect and gather data.



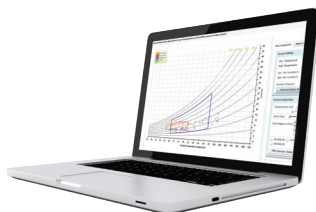
iX7 Intelligent Controller

The iX7 controller delivers more compute power, reliability, a new level of access control, multiple interface ports, and a future-proof design to help you manage your data center operations more efficiently and at lower costs.



Small Form Factor Provides Flexibility

Support existing cabinet infrastructure or mount outside a rack, in an equipment closet, or other areas to better use your available space with rackmount or vertical mount orientations.



Compatible with Monitoring Systems

Easily integrate into BMS or DCIM software with protocols like SNMP, MODBUS over TCP/IP, and JSON-RPI by leveraging the Xerus-enabled open architecture.

A Total Solution to Manage and Monitor all Aspects of Your Rack Environment

Remote Hub Ports

Utilize these ports to connect two Remote Hubs, providing access to 8 additional sensor ports. Each hub and its connected sensors can be located up to 50m (150 ft) away from the device, expanding coverage to where you need it.

iX7 Controller

The iX7 controller provides a future-proof design with more computing power, higher efficiency processors, a host of extra ports, and standard Gigabit Ethernet.



Model Shown: SRC-0800

Dual Power Supply

Dual power supplies and inputs provide genuine power redundancy. If one feed loses power, you won't lose power to the device.

Sensor Ports

Environmental Sensors

- Temperature
- Humidity
- Dust/Particle
- Airflow
- Differential Air Pressure
- Water Floor Leak
- Water Rope

Physical Access & Security Sensors

- Contact Closure
- SmartLock
- Proximity

Specialized Sensors

- Vibration
- Sensor Hubs

Smart Rack Controller Specifications

Model	Description*
SRC-0100	1U Smart rack controller with, 2 x C14 power inputs, 1 x RJ-45 sensor port, 1 x RJ-45 RS-485 port, 2 x USB-A ports, 1 x USB-B port, 2 x RJ-45 (10/100/1000 Mbps) Ethernet ports, 1 x RJ-45 feature port, multi-color LCD.
SRC-0102	1U Smart rack controller with, 2 x C14 power inputs, 1 x RJ-45 sensor port, 1 x RJ-45 RS-485 port, 2 x USB-A ports, 1 x USB-B port, 2 x RJ-45 (10/100/1000 Mbps) Ethernet ports, 1 x RJ-45 feature port, with built-in 1 x DX2-DH2C2 (Door Handle Interface), multi-color LCD.
SRC-0103	1U Smart rack controller with, 2 x Terminals (48VDC), 1 x RJ-45 sensor port, 1 x RJ-45 RS-485 port, 2 x USB-A ports, 1 x USB-B port, 2 x RJ-45 (10/100/1000 Mbps) Ethernet ports, 1 x RJ-45 feature port, 1 x DX2-DH2C2, multi-color LCD.
SRC-0800	1U Smart rack controller with, 2 x C14 power inputs, 8 x RJ-45 sensor ports, 1 x RJ-45 RS-485 port, 2 x USB-A ports, 1 x USB-B port, 2 x RJ-45 (10/100/1000 Mbps) Ethernet ports, 1 x RJ-45 feature port, with built-in 2 x RJ-45 ports to connect remote hubs, multi-color LCD.

* Power cords are not included

[Raritan.com/SRC](https://www.raritan.com/SRC)

800-724-8090 | sales@raritan.com

©2022 Legrand. All rights reserved. The industry-leading brands of Approved Networks, Ortronics, Raritan, Server Technology, and Starline empower Legrand's Data, Power & Control to produce innovative solutions for data centers, building networks, and facility infrastructures. Our division designs, manufactures, and markets world-class products for a more productive and sustainable future. The exceptional reliability of our technologies results from decades of proven performance and dedication to research and development. V1301